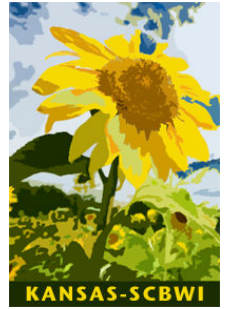




**Clare Vanderpool Scholarship Application Form
Society of Children's Book Writers and Illustrators - Kansas
2012 Conference**



Please fill in the following information. Type or Print Clearly:

Name: _____

Street: _____

City: _____

State: _____ Zip: _____

Email: _____

Phone: _____

Please circle:

Writer Illustrator Writer/Illustrator Are you in a critique group? YES NO

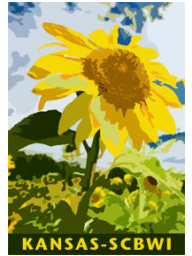
You may use a separate piece of paper to answer the following:

1. Have you attended one of our conferences before? If yes, when?
2. How many hours a week do you spend on your writing or illustrating?
3. What projects are you currently working on? (25 words or less)
4. Please describe your writing/illustration goals (25 words or less)
5. In 100 words or less, explain why you would like to attend the conference and what you hope to learn from it.
6. In 100 words or less, explain your financial need at this time.

What is the title of your sample work? See attached instructions. (Illustrators may provide their character's name or something else to identify their sample work.)



**Clare Vanderpool Scholarship
Society of Children's Book Writers and Illustrators - Kansas
2012 Conference**



Instructions for Submitting Sample Work

Do not include your name on your work. (If you do, you'll be disqualified).

Writers

Submit your manuscripts in standard manuscript format, except for your name, address and contact info.

- first ten pages of a novel (MG or YA) or a chapter book
- a picture book manuscript (no more than 1000 words)
- a magazine article or short story, including to whom you intend to submit

Illustrators

Submit color copies (**No original artwork!**) or jpgs

- a minimum of three images of your work (no more than ten images)
- a picture book dummy
- three character sketches and one finished image

How to Submit

Via Email

1. Fill out the application form and "save as" using your first and last names and KSCBWI Scholarship. (i.e. Jane Doe KSCBWI Scholarship)
2. Do NOT put your name on your submission pages or artwork. (If you do, you'll be disqualified).
3. Email your application, your cover page and your submission pages or artwork as separate attachments to ks_scbwi@yahoo.com, subject line: Scholarship Application

Via Postal Mail

1. Fill out the application form and paper clip it to your cover page and submission pages.
2. Do NOT put your name on your submission pages or artwork. (If you do, you'll be disqualified).
3. Include four (4) copies of all materials.
4. Mail your application to:
SCBWI Kansas
Scholarship Application
PO Box 3987
Olathe, KS 66063-3987

Deadline: Applications must be RECEIVED by March 15, 2012. Any submission that is not in compliance with the rules will be disqualified.